



ANB Sensors

JAN NEWSLETTER

BY DR KAY MCGUINNESS

Welcome to our first newsletter of 2022!

Here at ANB we are really excited about the launch of our new smaller pH sensor range this year. Throughout 2021 we listened to your feedback and designed our new sensor specifically for your requirements. Our focus during this first quarter is to extend the operational envelope of our sensor in terms of salinity, pH range & depth rating.

We would like to thank all our collaborators and partners for their feedback, insights and evaluation of the S Series.



DISTRIBUTORS

We are delighted to announce distributor partnerships with the following companies



UPCOMING EXPO



Our friends at Nipun Engg. will be showcasing the S1100 at Oceans Chennai 2022



BY DR NATHAN LAWRENCE

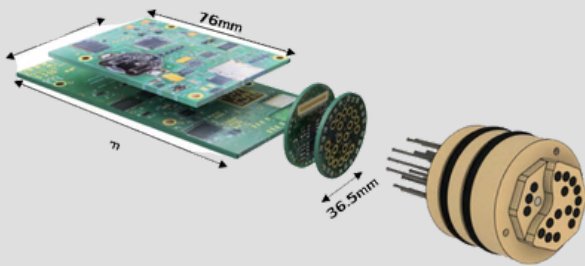
The final quarter of 2021 was as exciting as ever at ANB, with ocean trials across the globe for the S Series, whilst internally we have focused on understanding the challenges of widening the salinity and pH range of the sensor. These tests have been conducted in our temperature controlled tanks in the lab and at some local trial sites in Cambridgeshire UK. You certainly can't beat a muddy walk with the sensor with passers by asking what we are up to!

The S1100 has been taken to rivers and lakes which have salinities varying from 50-80uS/cm, far lower than the lower limit of our current ocean sensor (10ppt). The firmware has been updated to deal with these lower salinity ranges, with the results to date giving us confidence that we will achieve our aim of providing a calibration-free, freshwater to full ocean salinity pH sensor in the coming months.

Here's to an exciting 2022 from all the ANB Sensors team!



PRODUCT PORTFOLIO



S1000

ANB Sensors Integration Kit

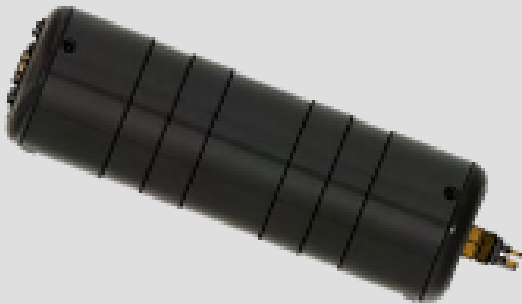
Adaptable for underwater vehicles & sondes

pH range: 2-10

Resolution: 0.01 pH

Accuracy: 0.05 pH

Instant Response



S1100

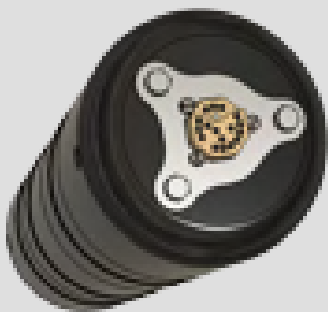
ANB Sensors 300m depth rated pH sensor

pH range: 2-10

Resolution: 0.01 pH

Accuracy: 0.05 pH

Instant Response



S1200

ANB Sensors 1000m depth rated pH sensor

pH range: 2-10

Resolution: 0.01 pH

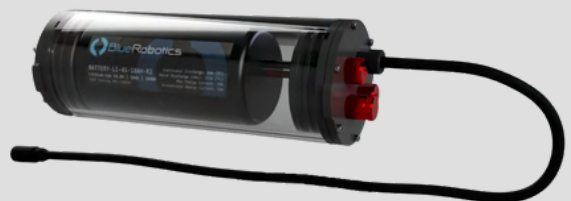
Accuracy: 0.05 pH

Instant Response



FLOW CUP

Flow cup adapter for S1100 to allow for easy installation into flowlines



BATTERY

15.6 Ah, 14V Battery
Canister & Charger